



CAPITOL LAKE — DESCHUTES ESTUARY

Long-Term Management Project Environmental Impact Statement

TECHNICAL WORK GROUP

May 14, 2021

Meeting Agenda

- ✦ 1:00 – Welcome
- ✦ 1:10 – EIS Project Update
- ✦ 1:20 – Draft EIS Public Outreach and Engagement
- ✦ 1:30 – Process for Selecting a Preferred Alternative
- ✦ 2:00 – Assessing Relative Importance of Selection Criteria
- ✦ 2:45 – Round-Table Feedback
- ✦ 2:50 – Public Comment
- ✦ 3:00 – Closing Remarks and Adjourn



Next Steps for EIS Process

- ✦ Complete preparation of Draft EIS
- ✦ Publish Draft EIS (anticipated June 30, 2021)
- ✦ Contents of Draft EIS
 - Project Background and History
 - Project Alternatives and Construction Approach
 - Existing Conditions and Affected Environment
 - Long-Term Impacts, Benefits, and Mitigation
 - Short-Term Impacts and Mitigation
 - Cumulative Effects
 - Planning-Level Costs
 - Funding, Governance, Work Groups, and Community Sounding Board
 - Permits and Approvals for Implementation of a Preferred Alternative



Draft EIS Outreach – July and August

- ✦ Public comment period (extended from 30 to 45 days)
- ✦ Work Group meetings (early July)
- ✦ E-newsletters and other notices
- ✦ Online open house (available throughout comment period)
- ✦ Interest group and jurisdictional briefings (as requested, in July)
- ✦ Online public hearing (July)
- ✦ Parkway and Heritage Park Trail Loop Self-Guided Open House
- ✦ Online office hours



Work Group and CSB Meetings Before and After Draft EIS

✦ Before Draft EIS (today)

- Preview EIS next steps and Draft EIS outreach
- Preferred Alternative selection criteria (EWG, TWG, CSB)

✦ Immediately After Draft EIS

- Describe key findings
- Answer clarifying questions
- Review process and engagement opportunities

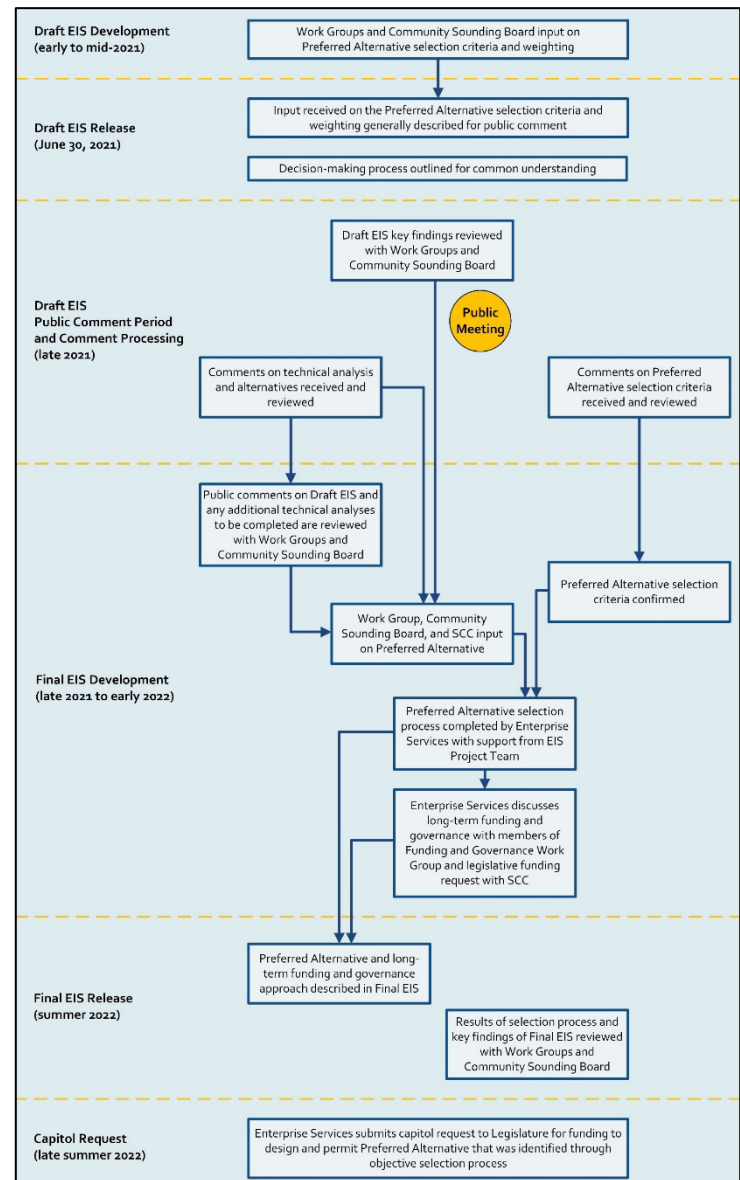
✦ After Draft EIS Public Comment Period

- Revisit Preferred Alternative selection criteria
- Preview steps between Draft EIS and Final EIS*

**Targeted for summer 2022, pending extent of public comments and additional technical analyses*



Preferred Alternative & Funding and Governance



Group Feedback

Name one key issue that you feel strongly should be a consideration in the decision-making process.



Preferred Alternative Selection Criteria

A. Performance Against Project Goals

B. Other Environmental Disciplines with Significant Findings

- Impacts and/or benefits

C. Environmental Sustainability

- The ability to provide net environmental benefits over a 30-year time horizon; and the level of active management required to achieve project goals

D. Economic Sustainability

- The relative cost-effectiveness to construct and operate the alternative in a way that would meet project goals; and the potential impacts if there is a lapse in long-term funding

E. Construction

- Duration/magnitude of impacts

F. Regional Sustainability

- Based on findings in the Draft EIS, which alternative(s) are most likely to achieve long-term support by local tribes, stakeholders, and communities?



Selection Criteria and Sub-Criteria

A. Performance Against Project Goals

- ✦ Water Quality
- ✦ Sediment Management
- ✦ Ecological Functions
- ✦ Active Community Use

B. Other Disciplines with Significant Findings

- ✦ Wetlands
- ✦ Fish & Wildlife
- ✦ Cultural Resources
- ✦ Visual Resources
- ✦ Environmental Health
- ✦ Transportation
- ✦ Public Services & Utilities
- ✦ Ecosystem Services

C. Environmental Sustainability

- ✦ Net Environmental Benefits
- ✦ Level of Active Management within Capitol Lake Basin
- ✦ Level of Active Management outside of Capitol Lake Basin

D. Economic Sustainability

- ✦ Up-front Construction Costs and Funding Source
- ✦ 30-year Maintenance Dredging Costs and Funding Source
- ✦ Economic Impacts if Lapse in Long Term Funding

E. Construction

- ✦ Duration of Impacts
- ✦ Magnitude of Impacts

F. Regional Sustainability

- ✦ Work Group Members
- ✦ Community Sounding Board
- ✦ State Capitol Committee



Criteria Feedback

Given the information Tessa provided about the proposed selection criteria, do you feel your key interests are represented in the selection criteria?

If not, what would you add and why?



Relative Importance of Preferred Alternative Selection Criteria

- ✦ Facilitated exercise in small groups to get individual and collective feedback
- ✦ Will not attribute individual selections
- ✦ One selection per organization
- ✦ Collective importance informs weighting for future decision-making
- ✦ Enterprise Services will determine final weighting using input from the EIS Work Groups and CSB



How the Pairwise Exercise Works

Criteria	A.	B.	C.	D.	E.	F.
A. Performance Against Project Goals		A or B	A or C	A or D	A or E	A or F
B. Other Environmental Disciplines with Significant Findings			B or C	B or D	B or E	B or F
C. Environmental Sustainability				C or D	C or E	C or F
D. Economic Sustainability					D or E	D or F
E. Construction						E or F
F. Regional Sustainability						



Small Groups Exercise

✦ Groups will:

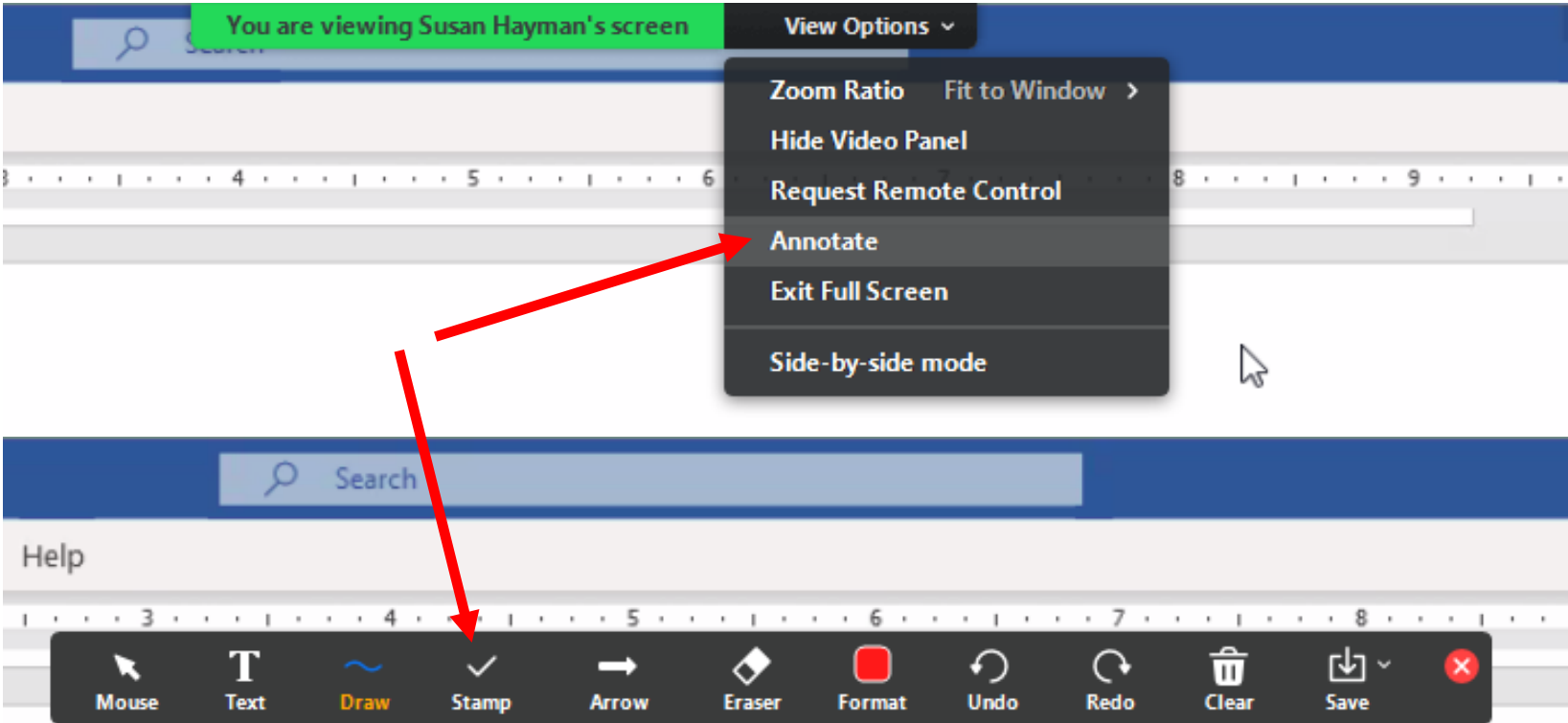
- Discuss criteria to ensure shared understanding
- Compare criteria and share perspectives
- Indicate individual preferences
- Identify one member to report out after the breakout session

✦ Facilitator will:

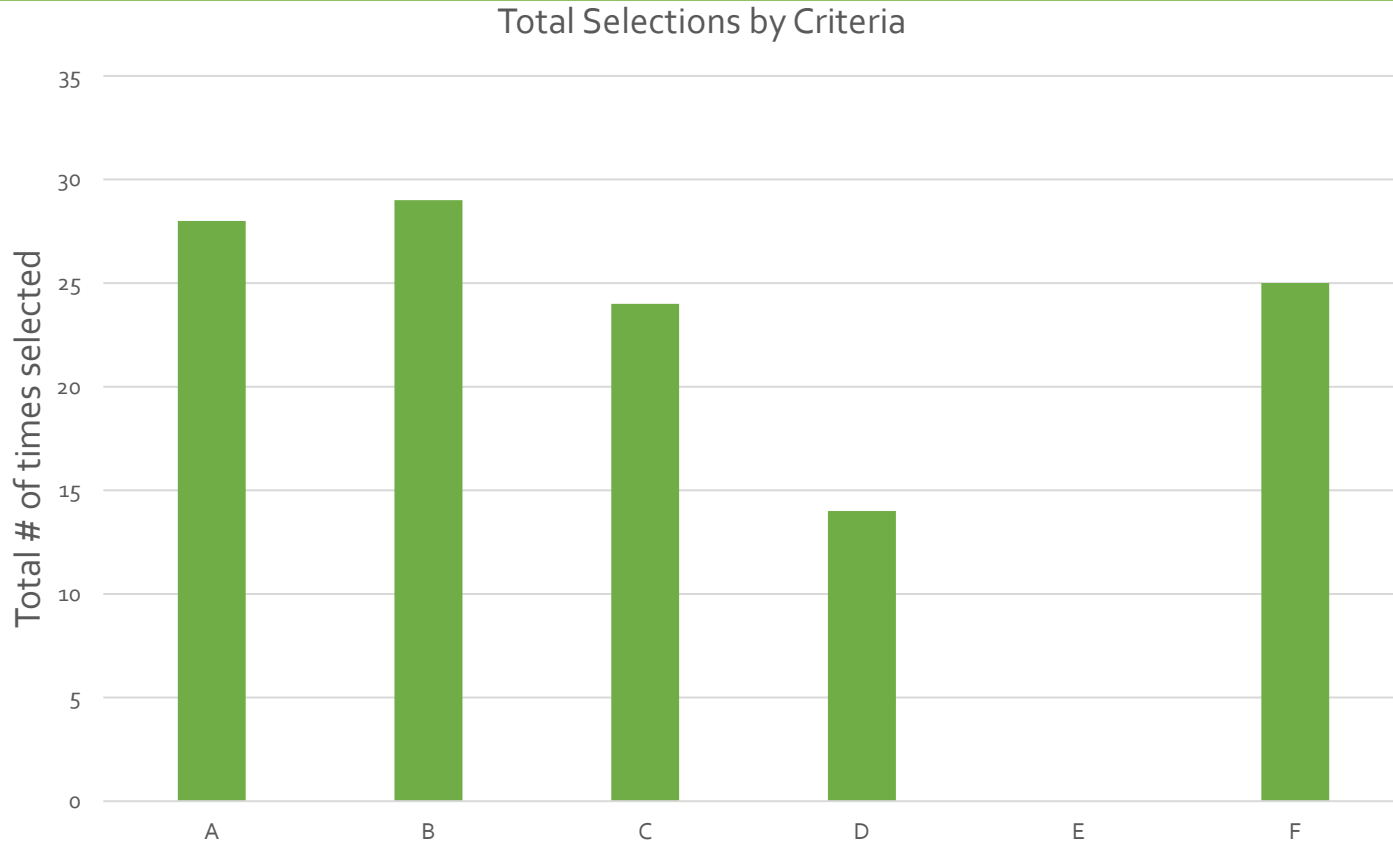
- Ensure that all voices are heard
- Encourage dialogue
- Tally and record responses
- Note key themes, disparities, etc.



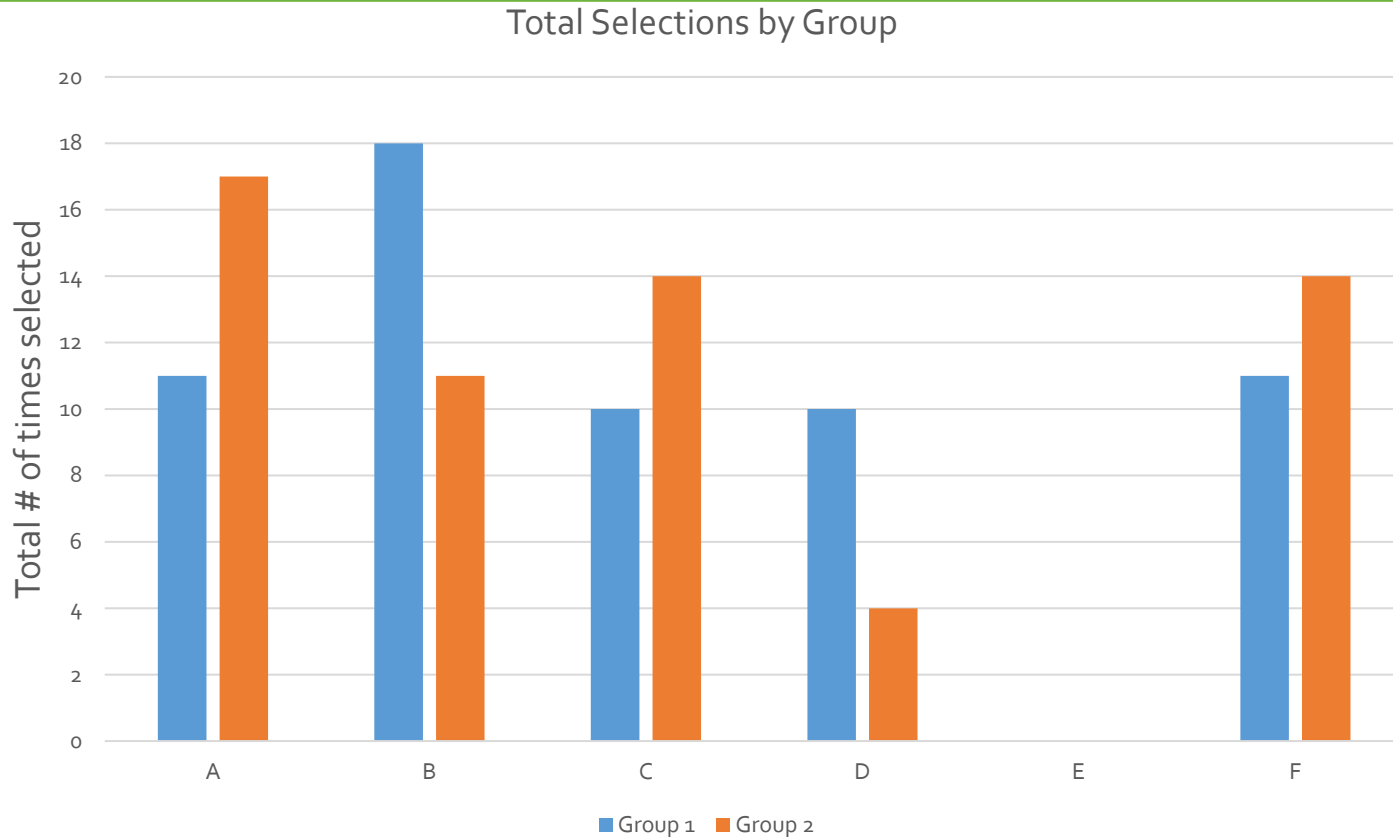
Annotating in Zoom



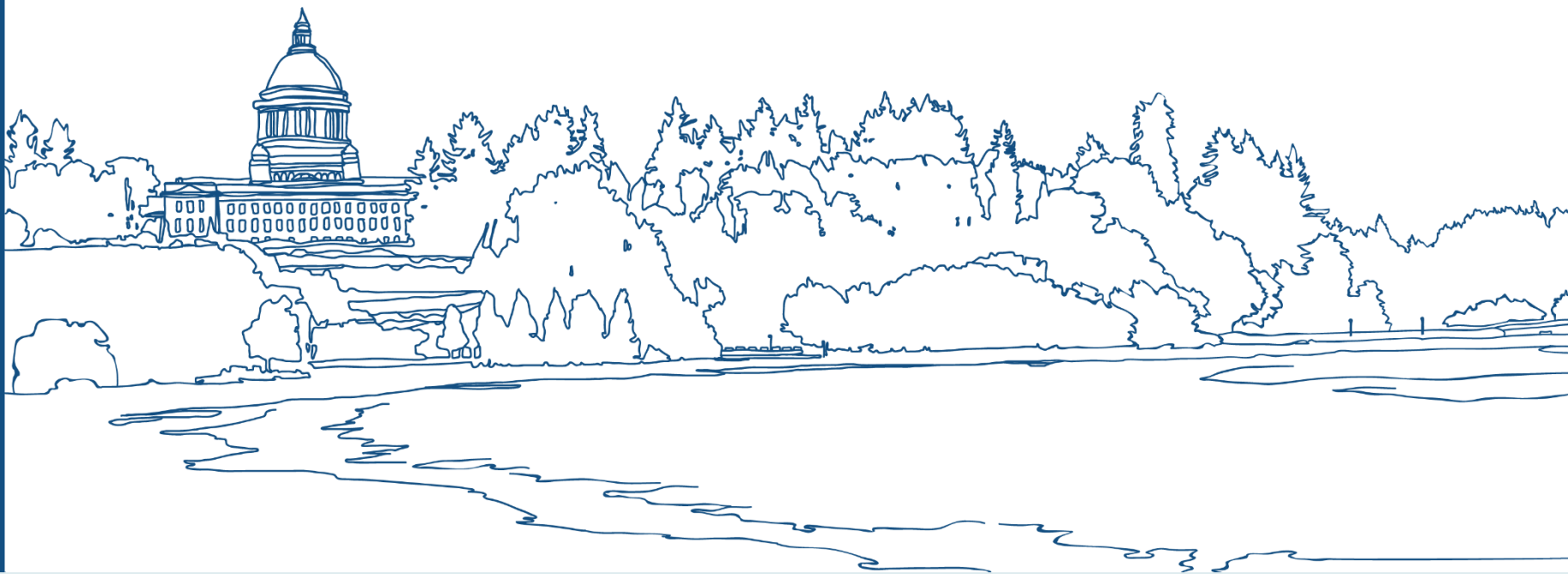
Relative Importance of Criterion – Pairwise Results



Relative Importance of Criterion by Group – Pairwise Results



Questions?



CAPITOL LAKE — DESCHUTES ESTUARY

Long-Term Management Project Environmental Impact Statement