



# CAPITOL LAKE — DESCHUTES ESTUARY

Long-Term Management Project Environmental Impact Statement

## EXECUTIVE WORK GROUP

May 17, 2021

# Meeting Agenda

---

- ✦ 9:00 – Welcome
- ✦ 9:10 – EIS Project Update
- ✦ 9:20 – Draft EIS Public Outreach and Engagement
- ✦ 9:35 – Process for Selecting a Preferred Alternative
- ✦ 10:00 – Assessing Relative Importance of Selection Criteria
- ✦ 10:40 – Round-Table Feedback
- ✦ 10:50 – Public Comment
- ✦ 11:00 – Closing Remarks and Adjourn



# Next Steps for EIS Process

---

- ✦ Complete preparation of Draft EIS
- ✦ Publish Draft EIS (anticipated June 30, 2021)
- ✦ Contents of Draft EIS
  - Project Background and History
  - Project Alternatives and Construction Approach
  - Existing Conditions and Affected Environment
  - Long-Term Impacts, Benefits, and Mitigation
  - Short-Term Impacts and Mitigation
  - Cumulative Effects
  - Planning-Level Costs
  - Funding, Governance, Work Groups, and Community Sounding Board
  - Permits and Approvals for Implementation of a Preferred Alternative



# Draft EIS Outreach – July and August

---

- ✦ Public comment period (extended from 30 to 45 days)
- ✦ Work Group meetings (early July)
- ✦ E-newsletters and other notices
- ✦ Online open house (available throughout comment period)
- ✦ Interest group and jurisdictional briefings (as requested, in July)
- ✦ Online public hearing (July)
- ✦ Parkway and Heritage Park Trail Loop Self-Guided Open House
- ✦ Online office hours



# Work Group and CSB Meetings Before and After Draft EIS

---

## ✦ Before Draft EIS (today)

- Preview EIS next steps and Draft EIS outreach
- Preferred Alternative selection criteria (EWG, TWG, CSB)

## ✦ Immediately After Draft EIS

- Describe key findings
- Answer clarifying questions
- Review process and engagement opportunities

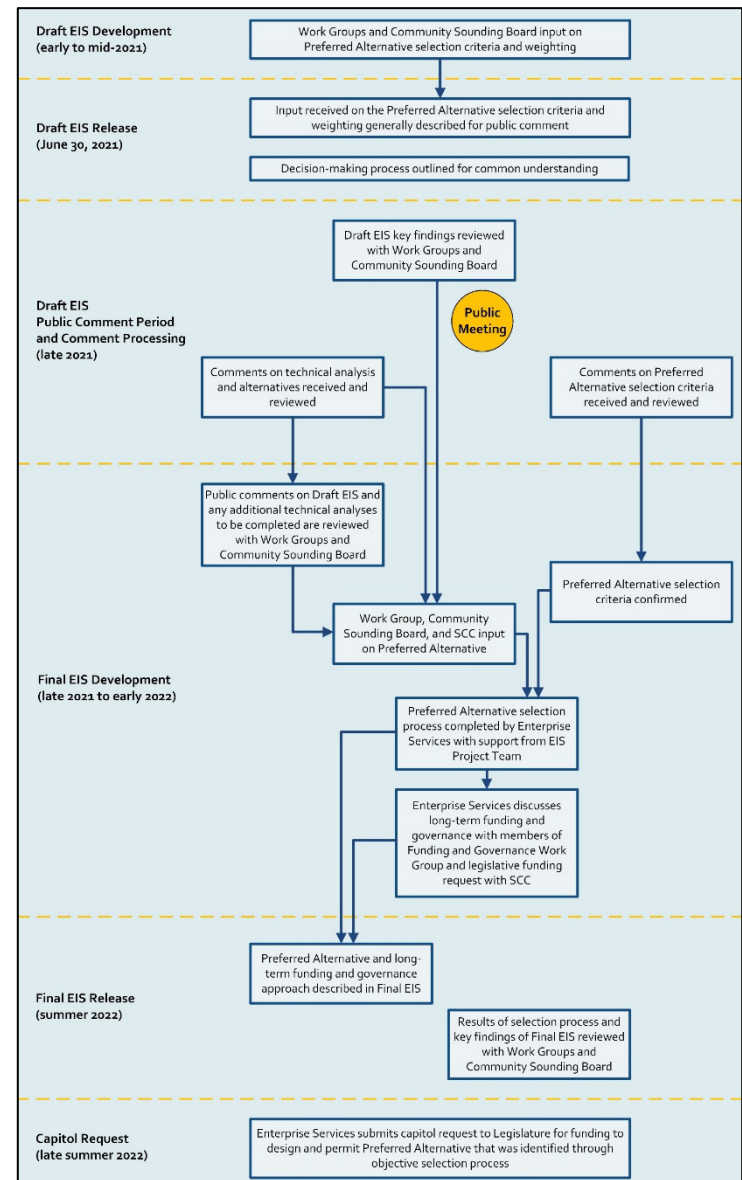
## ✦ After Draft EIS Public Comment Period

- Revisit Preferred Alternative selection criteria
- Preview steps between Draft EIS and Final EIS\*

*\*Targeted for summer 2022, pending extent of public comments and additional technical analyses*



# Preferred Alternative & Funding and Governance



# Group Feedback

---

Name one key issue that you feel strongly should be a consideration in the decision-making process.



# Preferred Alternative Selection Criteria

---

## A. Performance Against Project Goals

## B. Other Environmental Disciplines with Significant Findings

- Impacts and/or benefits

## C. Environmental Sustainability

- The ability to provide net environmental benefits over a 30-year time horizon; and the level of active management required to achieve project goals

## D. Economic Sustainability

- The relative cost-effectiveness to construct and operate the alternative in a way that would meet project goals; and the potential impacts if there is a lapse in long-term funding

## E. Construction

- Duration/magnitude of impacts

## F. Regional Sustainability

- Based on findings in the Draft EIS, which alternative(s) are most likely to achieve long-term support by local tribes, stakeholders, and communities?





# Selection Criteria and Sub-Criteria

## A. Performance Against Project Goals

- ✦ Water Quality
- ✦ Sediment Management
- ✦ Ecological Functions
- ✦ Active Community Use

## B. Other Disciplines with Significant Findings

- ✦ Wetlands
- ✦ Fish & Wildlife
- ✦ Cultural Resources
- ✦ Visual Resources
- ✦ Environmental Health
- ✦ Transportation
- ✦ Public Services & Utilities
- ✦ Ecosystem Services

## C. Environmental Sustainability

- ✦ Net Environmental Benefits
- ✦ Level of Active Management within Capitol Lake Basin
- ✦ Level of Active Management outside of Capitol Lake Basin

## D. Economic Sustainability

- ✦ Up-front Construction Costs and Funding Source
- ✦ 30-year Maintenance Dredging Costs and Funding Source
- ✦ Economic Impacts if Lapse in Long Term Funding

## E. Construction

- ✦ Duration of Impacts
- ✦ Magnitude of Impacts

## F. Regional Sustainability

- ✦ Work Group Members
- ✦ Community Sounding Board
- ✦ State Capitol Committee



# Criteria Feedback

---

Given the information Tessa provided about the proposed selection criteria, do you feel your key interests are represented in the selection criteria?

If not, what would you add and why?



# Relative Importance of Preferred Alternative Selection Criteria

---

- ✦ Facilitated exercise to get individual and collective feedback
- ✦ Will not attribute individual selections
- ✦ Collective importance informs weighting for future decision-making
- ✦ Enterprise Services will determine final weighting using input from the EIS Work Groups and CSB



# How the Pairwise Exercise Works

Criteria	A.	B.	C.	D.	E.	F.
A. Performance Against Project Goals		A or B	A or C	A or D	A or E	A or F
B. Other Environmental Disciplines with Significant Findings			B or C	B or D	B or E	B or F
C. Environmental Sustainability				C or D	C or E	C or F
D. Economic Sustainability					D or E	D or F
E. Construction						E or F
F. Regional Sustainability						



# Group Exercise

---

## ✦ Group will:

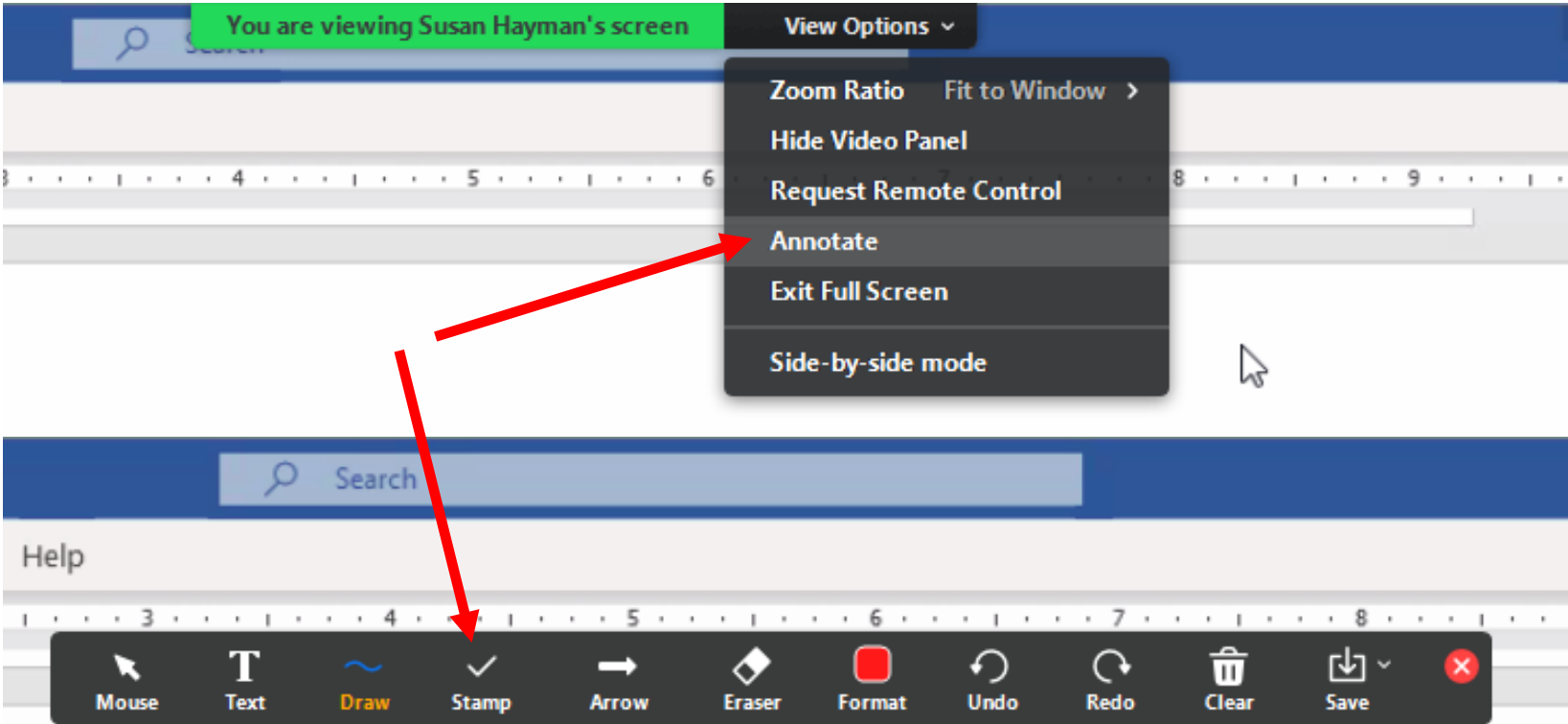
- Discuss criteria to ensure shared understanding
- Compare criteria and share perspectives
- Indicate individual preferences
- Identify one member to report out after the breakout session

## ✦ Facilitator will:

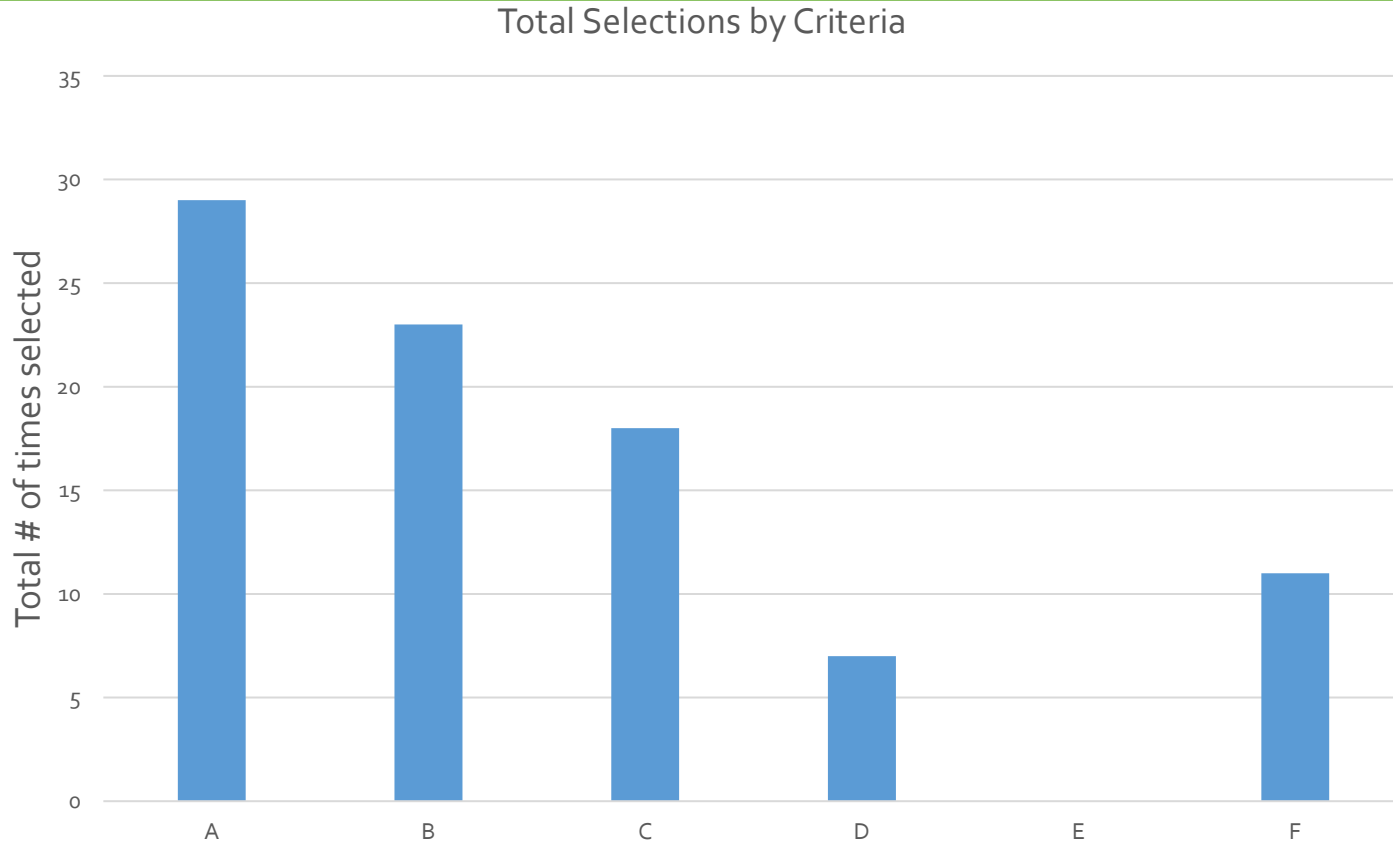
- Ensure that all voices are heard
- Encourage dialogue
- Tally and record responses
- Note key themes, disparities, etc.



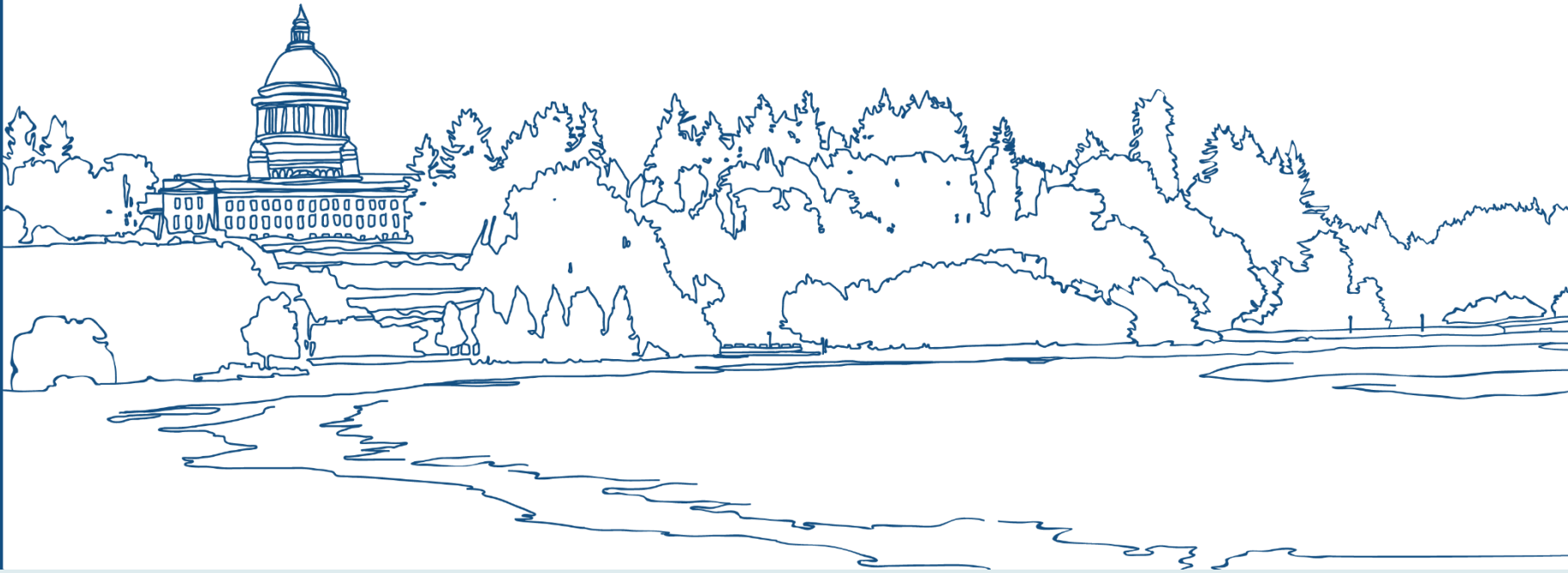
# Annotating in Zoom



# Relative Importance of Criterion – Pairwise Results



# Questions?



**CAPITOL LAKE — DESCHUTES ESTUARY**

Long-Term Management Project Environmental Impact Statement