

# WELCOME

---

Thank you for participating in this Public Scoping Meeting.

**Please sign in.**

## WHAT TO EXPECT TONIGHT

**5:30 - 8:30 p.m.: Open house with information and written comment stations**

- Opportunities to learn more at each station and ask questions
- Multiple opportunities to submit your comments

**6:00 - 8:00 p.m.: Verbal public comment session**

- Speakers will be selected by lottery
- A court reporter will record speakers' comments
- Please visit the Welcome table to obtain a ticket to speak during the session



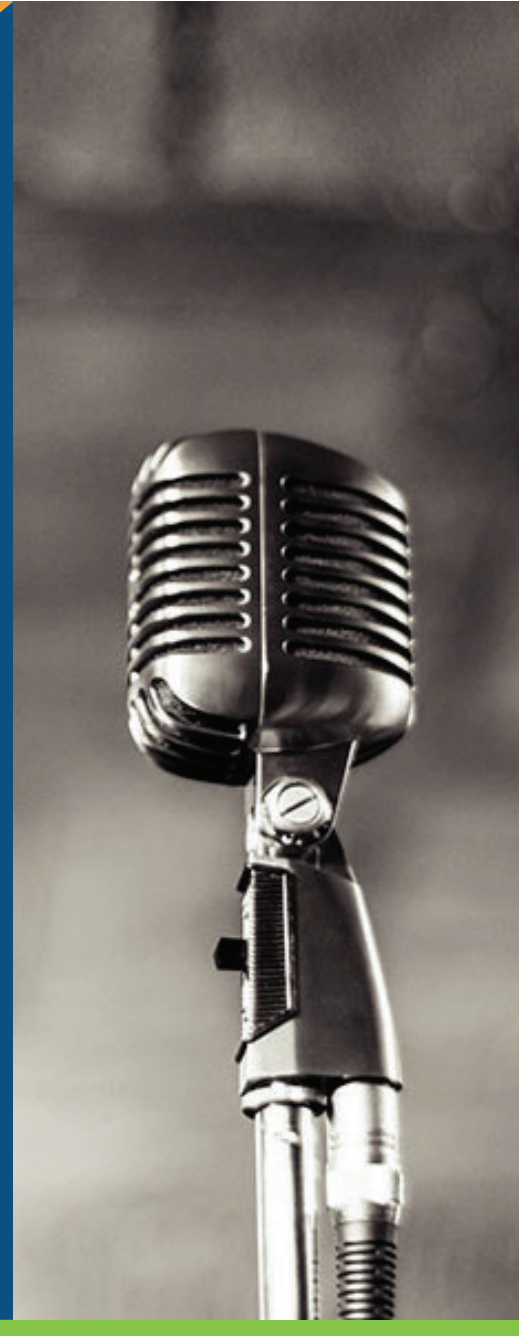
**CAPITOL LAKE/LOWER DESCHUTES WATERSHED**

Long-Term Management Project Environmental Impact Statement

October 2018

# GUIDELINES FOR VERBAL COMMENTS

- **Each speaker will have a maximum of two minutes** to share their comment.
- **Comments should be relevant to the project.** Questions asked during the verbal comment session will not be answered at the meeting, but substantive and relevant questions will be considered for the Draft EIS or through the “FAQs” posted on the online open house.
- **One person speaks per turn**, unless two or more are speaking in unison and have confirmed in advance with the facilitator.
- **All participants will be asked to mute electronic devices and refrain from applause and verbal responses during or after speakers;** instead participants are asked to raise hands/signs if they wish to show support for a particular comment.
- **Signs are not permitted** in the hearing or open house room, with the exception of paper signs no larger than 11x17.
- **All comments should be respectful** and refrain from using profanity or making inappropriate comments. The facilitator will intervene if necessary to ensure a safe and constructive meeting.



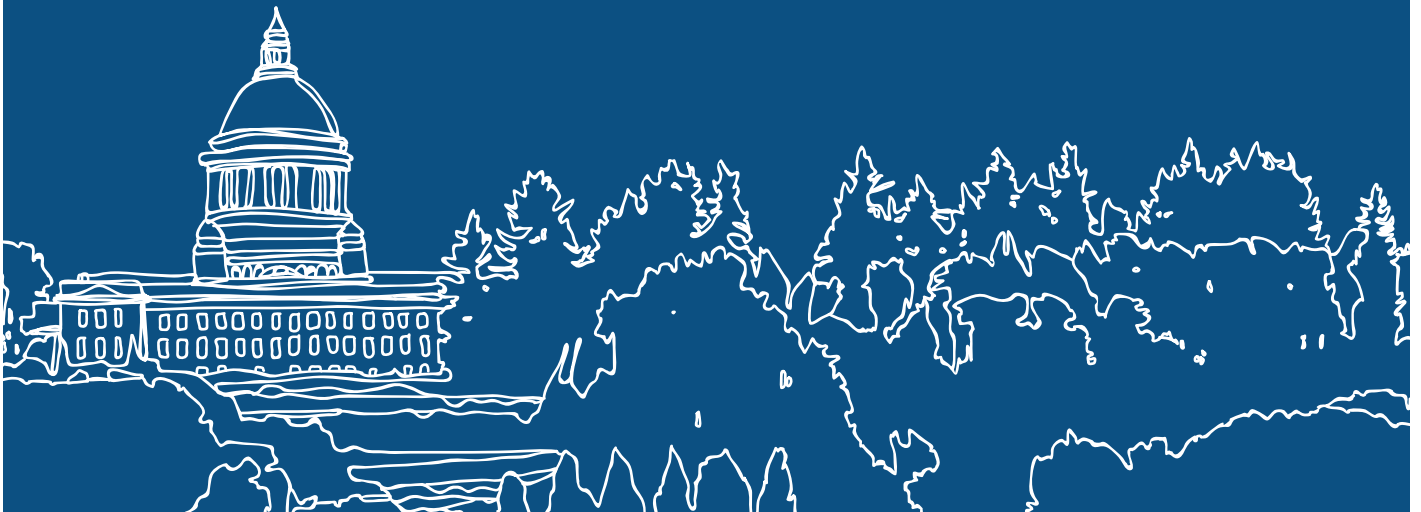
# PROJECT OVERVIEW

## PROJECT LOCATION

- Capitol Lake/Lower Deschutes Watershed includes the 260-acre Capitol Lake Basin, located on the Washington State Capitol Campus.
- The Capitol Lake Basin is located within the area extending from the south end at Tumwater Falls in the City of Tumwater to the north end at the Fifth Avenue Dam in the City of Olympia.

## BACKGROUND

- This waterbody is an important recreational resource and valued amenity; however, it suffers from numerous environmental issues, including: water quality standard violations, sediment management issues, presence of invasive species, and restricted active community use.
- Long-term management strategies and actions are needed to address environmental issues.
- In 2016, stakeholders in collaboration with Enterprise Services identified common goals that should be satisfied by any long-term management alternative.
- In 2018, Enterprise Services was directed by the State Legislature to evaluate alternatives for long-term management.



# KEY ISSUES

---

Capitol Lake/Lower Deschutes Watershed is a 260-acre waterbody located on the Washington State Capitol Campus, in Olympia, Washington. This waterbody is an important recreational resource and valued amenity; however, it suffers from numerous environmental issues.



## WATER QUALITY STANDARD VIOLATIONS

Capitol Lake is currently violating water quality standards because of high levels of phosphorus, which cause algae blooms that deplete dissolved oxygen in Capitol Lake and the adjacent Budd Inlet, using up oxygen essential for fish and other aquatic life.



## SEDIMENT MANAGEMENT ISSUES

Every year more than 35,000 cubic yards of sediment from the Deschutes River is deposited within the lake basins, resulting in increasingly shallow conditions. Today, the lake is about 21 percent smaller and it holds roughly 60 percent less water than it did in 1951.



## PRESENCE OF INVASIVE SPECIES

Fish and wildlife habitat are impacted due to the presence of several invasive and nuisance species including the New Zealand mudsnail, purple loosestrife, Eurasian watermilfoil, nutria, and Canada geese. These species out compete and negatively impact native populations.



## RESTRICTED ACTIVE COMMUNITY USE

Over the years, high bacterial levels and the presence of invasive species have resulted in impacts to the recreational use of Capitol Lake. The presence of New Zealand mudsnails resulted in official closure to all active uses in 2009 and active use of the waterbody continues to be restricted today.



**CAPITOL LAKE/LOWER DESCHUTES WATERSHED**

Long-Term Management Project Environmental Impact Statement

October 2018

# PROJECT AREA



## CAPITOL LAKE/LOWER DESCHUTES WATERSHED

Long-Term Management Project Environmental Impact Statement

October 2018

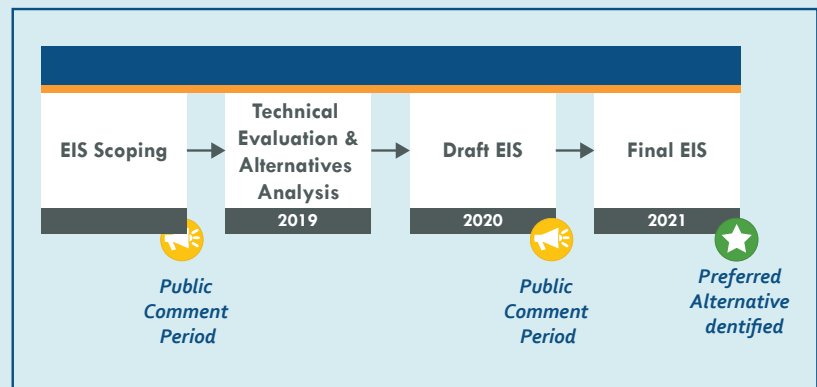
# ENVIRONMENTAL IMPACT STATEMENT

The Washington State Department of Enterprise Services (Enterprise Services) is overseeing the preparation of an Environmental Impact Statement (EIS) under the State Environmental Policy Act (SEPA). Enterprise Services was directed by the State Legislature to evaluate alternatives for long-term management of the Capitol Lake/Lower Deschutes Watershed.

## WHAT IS AN EIS?

An EIS is a document that provides impartial, comprehensive discussion of a project's potential significant adverse impacts, reasonable alternatives, and proposed measures to avoid or minimize impacts. The EIS will:

- **Analyze the potential environmental impacts and benefits** of a range of reasonable alternatives
- **Identify a preferred alternative** for long-term management
- **Provide decision makers with information to consider** in making permitting and approval decisions



The EIS will not advocate for or against a project or a project alternative nor does it constitute a decision or approval on its own.

## WHAT TRIGGERS AN EIS?

An EIS is initiated by a Determination of Significance (DS). A DS is issued when the lead agency determines that a project is likely to have significant adverse environmental impacts, based on an evaluation of the project and information about potential environmental impacts.

## HOW LONG WILL THIS PROCESS TAKE?

An EIS of this size and complexity will require about three years to complete.

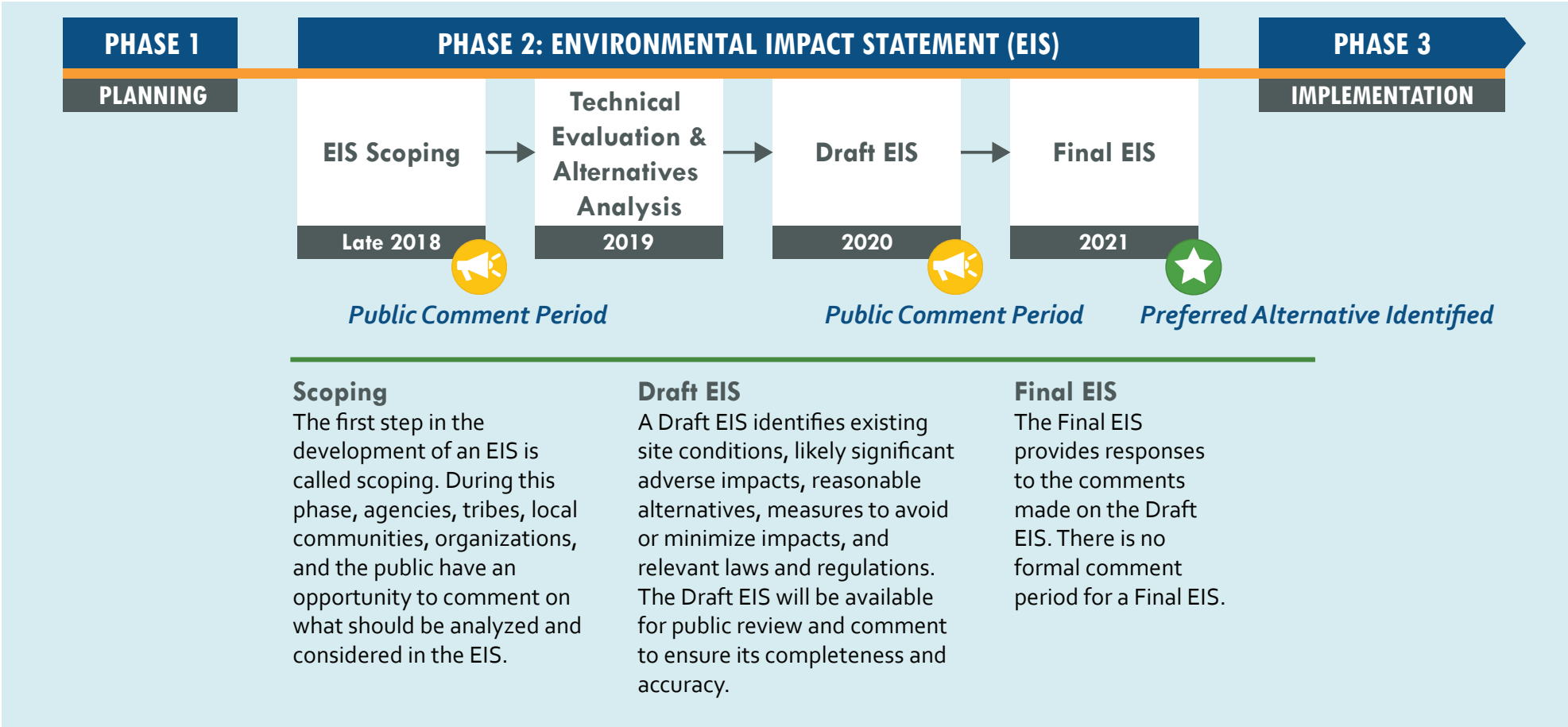


CAPITOL LAKE/LOWER DESCHUTES WATERSHED

Long-Term Management Project Environmental Impact Statement

October 2018

# STEPS OF AN ENVIRONMENTAL IMPACT STATEMENT



# SCOPING: SEPTEMBER 26 - NOVEMBER 13, 2018

---

The first step in the development of an EIS is called scoping. During this phase, agencies, tribes, local communities, organizations, and the public have an opportunity to comment on what should be analyzed and considered in the EIS. Scoping includes a public comment period and in-person meetings.

## **WHAT KINDS OF COMMENTS ARE USEFUL DURING SCOPING?**

The scoping process is intended to collect input on what should be studied regarding the following topics:

- Alternatives
- Potential environmental impacts
- Potential mitigation measures to avoid or minimize impacts
- Permits or other approvals that may be required

## **QUESTIONS MAKE GREAT SCOPING COMMENTS, FOR EXAMPLE:**

- What will happen to x if alternative y is selected?
- Will the analysis include x and y?





# WHAT HAPPENS TO THE COMMENTS?

---

All comments will be reviewed by the project team and considered when determining the scope of analysis for the EIS.

- **All comments submitted will be considered equally** regardless of how they are submitted.
- **An interdisciplinary team of consultants will prepare a scoping report** that will organize and summarize the comments for Enterprise Services to review and consider when determining what should be analyzed in the EIS.
- **Individual comments will not be responded to** during scoping.
- **All comments submitted will be made available on the project website.** Comments will be posted following meetings and at the conclusion of scoping.



# ALTERNATIVES TO BE EVALUATED

## (AT A MINIMUM)

---

Enterprise Services, as the lead agency under SEPA, has identified a minimum of four primary alternatives to be evaluated in the EIS.

### **1. MANAGED LAKE**

### **2. RESTORED ESTUARY**

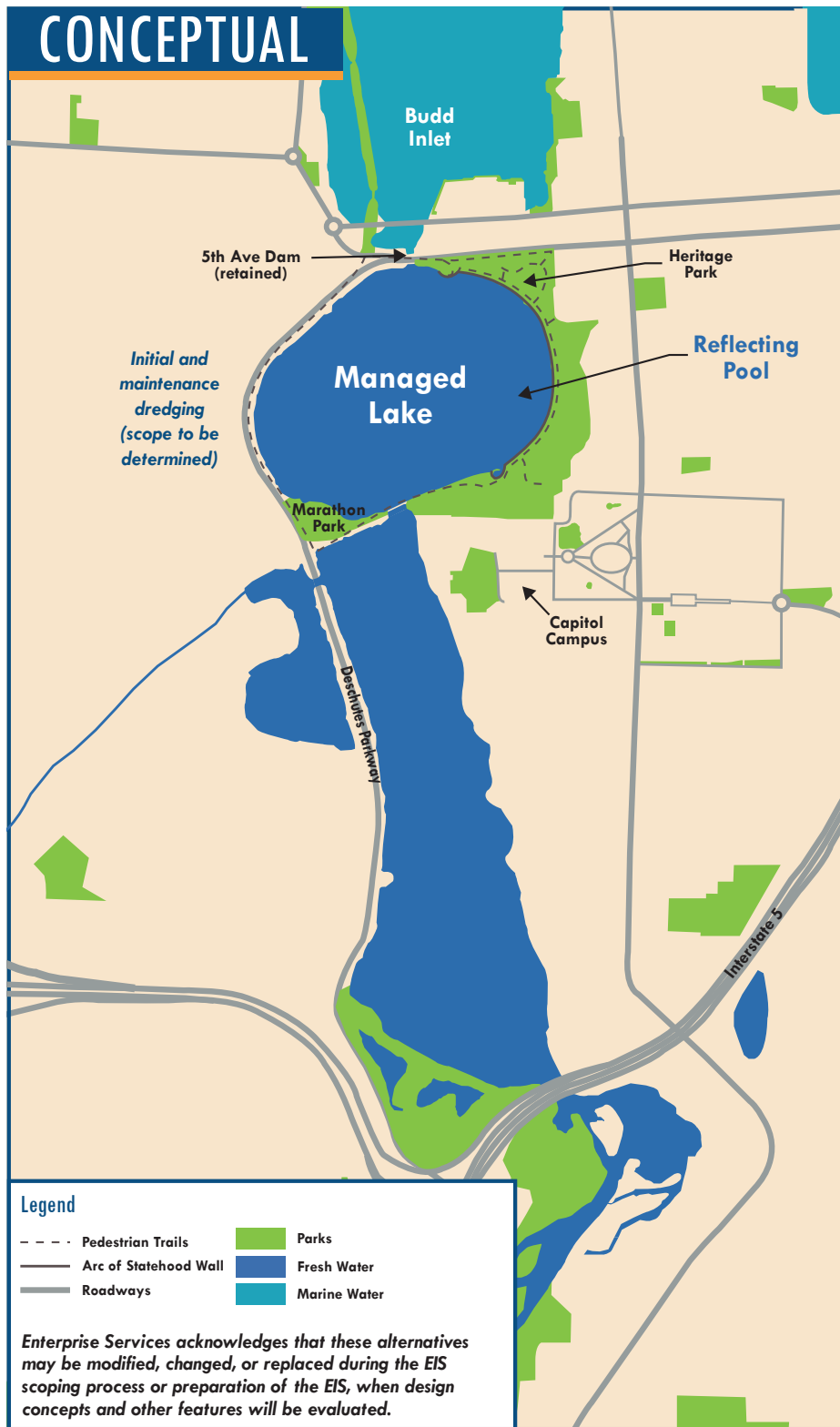
### **3. HYBRID**

### **4. NO ACTION (required in an EIS)**

The fundamental concepts for these four primary alternatives are summarized at this station. Several options and concepts, or variations of the primary alternatives, have also been proposed. A screening process will be used to identify the range of alternatives that move forward for detailed technical review in the EIS. Options and concepts will be screened for their ability to meet project objectives and their feasibility.



# MANAGED LAKE ALTERNATIVE

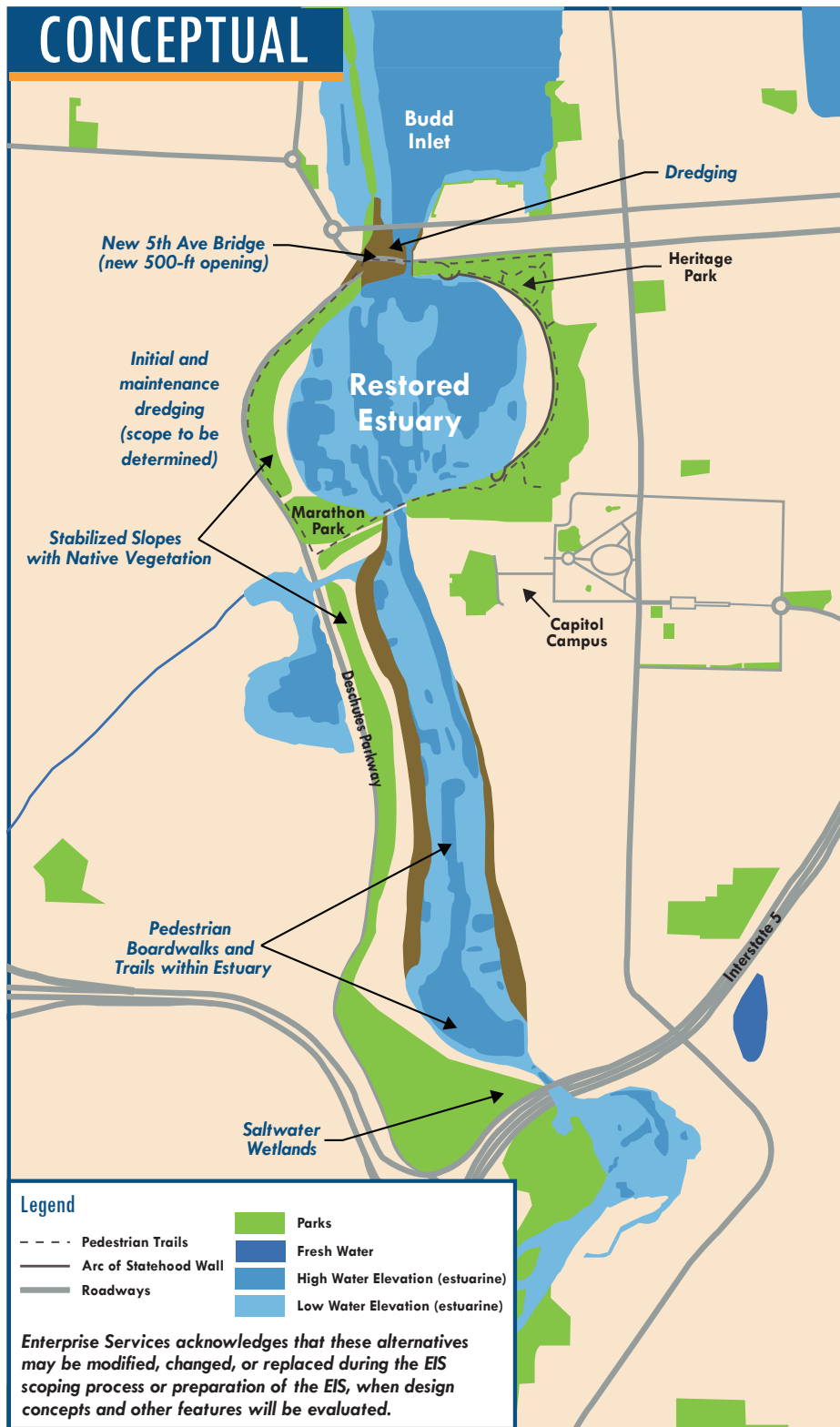


## CAPITOL LAKE/LOWER DESCHUTES WATERSHED

Long-Term Management Project Environmental Impact Statement

October 2018

# RESTORED ESTUARY ALTERNATIVE

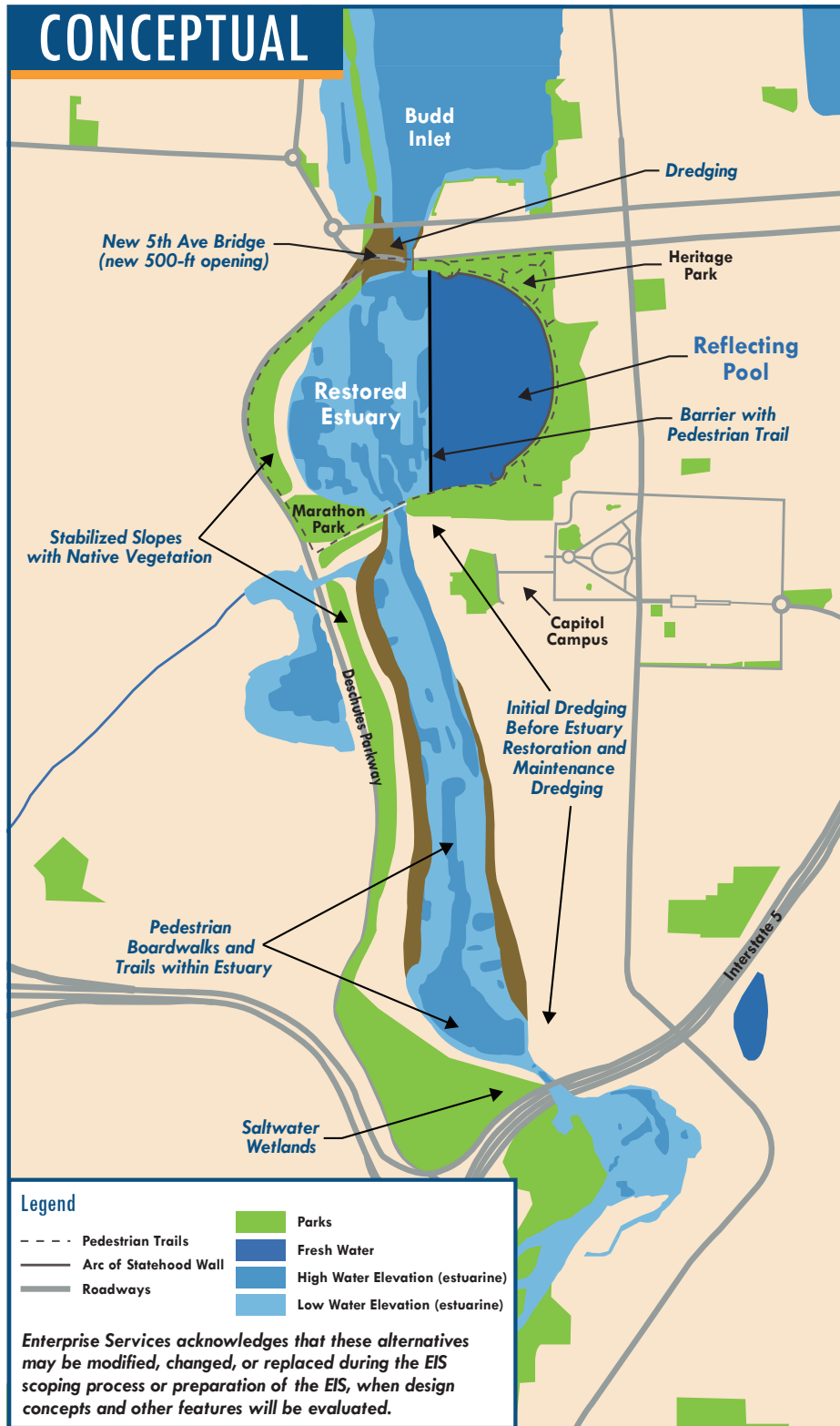


## CAPITOL LAKE/LOWER DESCHUTES WATERSHED

Long-Term Management Project Environmental Impact Statement

October 2018

# HYBRID ALTERNATIVE



## CAPITOL LAKE/LOWER DESCHUTES WATERSHED

Long-Term Management Project Environmental Impact Statement

October 2018

# EIS TOPICS

---

## WHAT WILL BE IN THE EIS?

An EIS provides an impartial discussion of significant environmental impacts. Enterprise Services has preliminarily identified the following natural and built environment elements for analysis in the EIS:

- Water Resources
- Earth Resources
- Air Quality
- Plants and Animals
- Energy and Natural Resources
- Land and Shoreline Use
- Recreation
- Aesthetics
- Transportation
- Historic and Cultural Preservation

**Additional environmental topics** were discussed in coordination with various stakeholders during Phase 1. These topics, which are expected to be analyzed in the EIS due to the potential for significant adverse impacts, include:

- Sediment Transport and Geomorphology
- Invasive Species
- Economics
- Sea Level Rise and Climate Change



# HOW TO COMMENT ON THE EIS

## SUBMIT YOUR COMMENTS TODAY

*The scoping comment period ends on November 13, 2018.*

We want to hear from you! The public plays an essential role in the EIS process. Please submit your comments on what should be studied in the EIS by November 13, 2018.

## TIPS FOR COMMENTING

- Be clear, concise and organized
- Focus on the elements or disciplines you would like to see studied in the EIS and the reason(s) why
- Give specific feedback that includes factual information and identifies possible solutions

## THE MOST USEFUL SCOPING COMMENTS FOCUS ON:

- Potentially affected resources and extent of study and analysis needed to understand each potential impact
- Measures to avoid, minimize, and mitigate (offset) effects of a proposed option
- A reasonable range of alternatives, including project designs

## SUBMIT YOUR COMMENTS NOW

Use one of the provided computers to submit an online comment or fill out a comment card.

## OTHER WAYS TO COMMENT

### ONLINE

[CapitolLakeWatershedEIS.participate.online](http://CapitolLakeWatershedEIS.participate.online)

### EMAIL

[comment@CapitolLakeWatershedEIS.org](mailto:comment@CapitolLakeWatershedEIS.org)

Comments must be submitted on or before November 13, 2018

### MAIL

Department of Enterprise Services  
c/o Bill Frare – Capitol Lake/Lower  
Deschutes Watershed EIS  
P.O. Box 41476  
Olympia, WA 98504

*Comments must be postmarked by November 13, 2018*



**CAPITOL LAKE/LOWER DESCHUTES WATERSHED**

Long-Term Management Project Environmental Impact Statement

October 2018

# COMMENT

---

Your comments will assist us in determining the topics to be considered in the Draft Environmental Impact Statement.

## **Please share your comments tonight:**

- Using a provided computer to submit an online comment form
- Completing a handwritten comment card
- Visiting the Welcome table and obtaining a lottery ticket for the facilitated verbal public comment session from 6:00 - 8:00 p.m.

## **Submit comments online 24/7 through November 13, 2018:**

- **[CapitolLakeWatershedEIS.participate.online](https://CapitolLakeWatershedEIS.participate.online)**
- **[comment@CapitolLakeWatershedEIS.org](mailto:comment@CapitolLakeWatershedEIS.org)**

